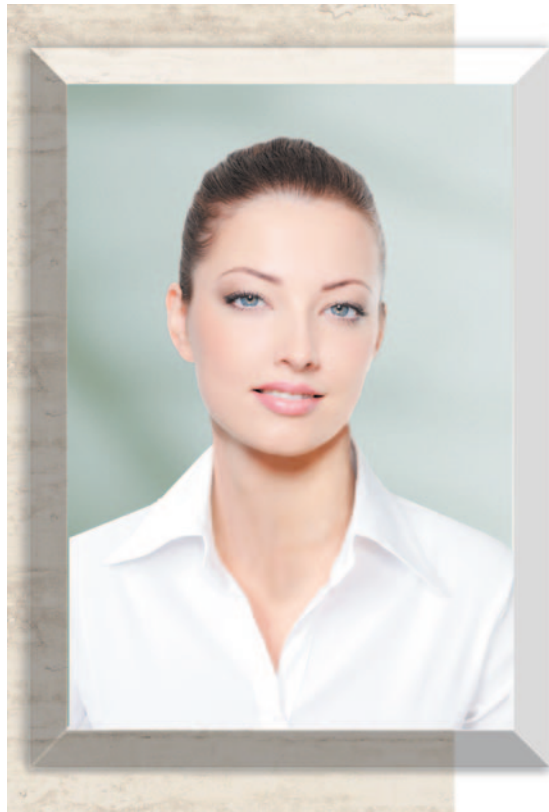


## RETTANGOLARE

fotocristalli - *crystal photo*



smusso trasparente  
*transparent chamfer*



smusso foto piena  
*full image on chamfer*



taglio netto - foto piena  
*full image on net cut*

## FOTOCRISTALLO RETTANGOLARE

cristalli - *crystal*

<i>colori</i>	<i>bianco/nero</i>	<i>cm</i>
DR9	DR9BN	9x12
DR11	DR11BN	11x15
DR13	DR13BN	13x18
DR18	DR18BN	18x24
DR20	DR20BN	20x25
DR24	DR24BN	24x30
DR30	DR30BN	30x40

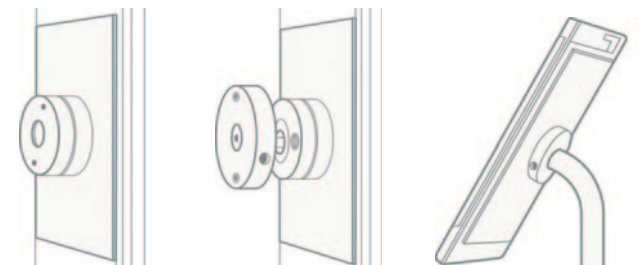
## SUPPORTI - *Supports*

distanziali - snodabili - da appoggio  
*spacers - orientable - ground-standing*

Art. SUP01 distanziale fisso

Art. SUP02 distanziale orientabile

Art. SUP03 braccetto da appoggio



## FOTOCRISTALLO OTTAGONALE

cristalli - crystal

<i>colori</i>	<i>bianco/nero</i>	<i>cm</i>
DOT9	DOT9BN	9x12
DOT11	DOT11BN	11x15
DOT13	DOT13BN	13x18
DOT18	DOT18BN	18x24

## FOTOCRISTALLO OVALE

cristalli - crystal

<i>colori</i>	<i>bianco/nero</i>	<i>cm</i>
DOV9	DOV9BN	9x12
DOV11	DOV11BN	11x15
DOV13	DOV13BN	13x18
DOV18	DOV18BN	18x24

Scelta fondi a pag. 172

*Choice of backgrounds on page 172*

## OTTAGONALE - OVALE

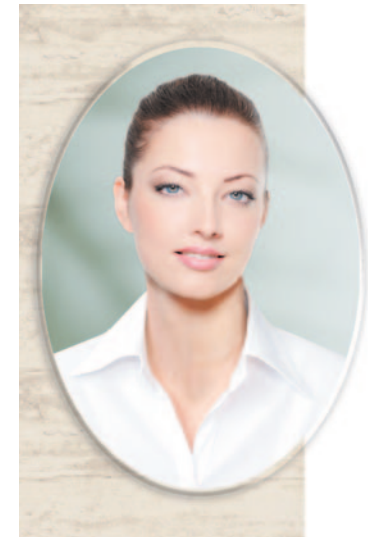
fotocristalli - *crystal photo*



Ottagonale smusso trasparente  
*Octagonal transparent chamfer*



Ottagonale smusso foto piena  
*Octagonal full image on chamfer*



Ovale taglio netto - foto piena  
*Oval full image on net cut*